

# PRINCETON SENIOR RESOURCE CENTER CULTIVATING COMMUNITY



ANNUAL REPORT FY 2022–2023



Dear Friends,

As we reflect on the past year and look ahead to the future, we are filled with gratitude and hope as we present the annual report for the 2022-2023 fiscal year at the Princeton Senior Resource Center. Over the course of the past year, we have witnessed remarkable growth in our programs and services, and seen meaningful connections develop among our participants and new community and organizational partners. It has truly been a year of “Cultivating Community.”

At the core of our efforts has been an unwavering commitment to fostering a strong and vibrant community for older adults. This year, we have focused on creating opportunities and spaces that cultivate meaningful connections, celebrating the rich diversity of our community, and promoting a sense of belonging for all. Through new partnerships with organizations such as Community Without Walls and The Senior Citizens Club of Princeton, we have helped connect folks with one another for friendship and support.

The Nancy S. Klath Center has become a hub of knowledge and inspiration, providing a safe and inclusive space for people to connect, share experiences, and explore new passions. Through our expanded range of programs and initiatives, we have encouraged older adults to embrace learning as a lifelong journey, empowering them to discover new talents, broaden their horizons, and form lasting friendships. And, because of your generosity, we successfully reached 100% of our \$5.35 million capital campaign goal one full year early!

In our pursuit of cultivating community, we continue to embrace technology and innovation. The digital landscape has become integral to our lives, and we have successfully leveraged technology to foster connection. Our hybrid programs have allowed us to bridge the gap between in-person and virtual engagement, ensuring that no one is left behind. By embracing technology, we have expanded our reach, providing access to our programs and services to individuals who may face geographical or mobility constraints. This inclusivity has fostered a sense of togetherness and belonging within our community.

The cultivation of community includes our continued dedication to supporting older adults in all aspects of their lives. Our team of dedicated social service professionals has provided compassionate and personalized support through one-on-one counseling and case management, resource referral, and social groups that foster a sense of belonging and mutual support. We have also strengthened our support and outreach in affordable housing communities, forging partnerships to address the unique needs of those facing socio-economic challenges.

None of this would be possible without the unwavering support and dedication of our generous donors, corporate and community partners, and friends. It is through your belief in our mission and your contributions that we can cultivate a community that thrives. Together, we are shaping a future where older adults can flourish, find purpose, and experience the joys of belonging to a vibrant and inclusive community. Thank you for joining us on this remarkable journey as we cultivate a community that celebrates the wisdom, experiences, and resilience of each individual.

With Gratitude,

  
Drew A. Dyson  
Chief Executive Officer

  
Joan Girgus  
Board President



# REFLECTIONS UNEARTHED: LOOKING BACK AT 2022-2023

**5,437** Constituents Served by PSRC

---

**1,443** Participants in Social & Support Groups

---

**987** Hours of Case Management  
& Counseling

---

**513** Seniors in Sports & Exercise Programs

---

**2,812** Students in Lifelong Learning Programs

---

**1,859** Participants in Enrichment  
& Social Programs

---

**878** Client Visits & Workshop Participants  
in PSRC's Technology Lab

---

**6,054+** Volunteer Hours Contributed to PSRC

# ROOTED IN SERVICE



## PSRC'S HISTORY & COMMITMENT TO AFFORDABLE HOUSING

In 1974, with a grant from the New Jersey Department of Community Affairs, the Princeton Senior Resource Center (PSRC) was born as “Tenant Services” to provide programs and social service support for residents of Spruce Circle, a senior public/affordable housing development operated by the Princeton Housing Authority (PHA). For the last forty-nine plus years, PSRC and PHA have had a strong partnership, and PSRC has faithfully served the residents of Spruce Circle and expanded our services to older adult residents of Redding Circle, Clay Street, and other developments of PHA. In 2022, PSRC expanded our commitment to senior residents of affordable housing communities by entering into a partnership with Pirhl Developers, and later Conifer, to become the social service provider for the new Princeton Senior Living community on Thannet Circle, an eighty-unit all senior affordable housing community. “PSRC from the very beginning was rooted in compassion, service, and a commitment to support the senior residents of our community who reside in these affordable housing communities,” offered CEO Drew Dyson. “As we look forward to the future, I see that commitment continuing to expand and build on this firm foundation established by our founder Jocelyn Helm, my predecessor Susan Hoskins, and so many others whose heart for service left an indelible mark on PSRC.”



“Talk and teas  
connect us as  
neighbors, fostering  
community one chat  
at a time.”

—William B.



## TALK AND TEA

In response to the increasing need for socialization among residents in Spruce Circle and Redding Circle, Talk and Tea was formed to bring residents together in a social setting. After each “talk,” a short informational session or topic introduced, participants have the chance to engage in open discussions where they can share their thoughts, ask questions, and connect with fellow participants. This allows everyone gathered the opportunity to delve deeper into the topics that resonate with them and exchange ideas with a diverse group of like-minded individuals. This unique gathering is an often unforgettable blend of thoughtful discussion with the soothing comfort of tea, designed to nurture both mind and soul.

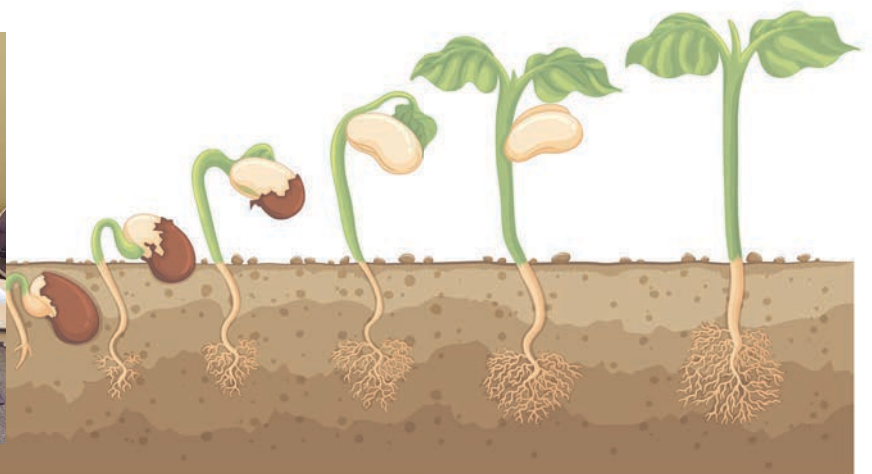
## IN-DEPTH WORKSHOPS

These new workshops were created to provide resources and information to the residents of the Princeton Housing Authority. Participants have an opportunity to engage in enlightening and lively discussions led by community leaders who explore a wide range of interesting topics. With topics ranging from transportation options to Medicare Benefits, as well as new benefits such as the Affordable Connectivity Program (ACP), these talks are designed to spark curiosity and inspire new ways of thinking, as well as introduce residents to new benefits.



“I didn’t know I was grieving until I attended the workshop on grief that not only gave me words for what I was feeling, but gave me friends to walk alongside me.”

—Patricia G.



# NURTURING WELLNESS

In fiscal year 2023, we set out to revitalize and enhance our health and wellness programs for our vibrant community. The outcome surpassed expectations with nearly 2,000 active participants across fourteen different exercise programs. In addition, with the help of a federal grant and a partnership with the National Council on Aging, PSRC relaunched the award-winning Vaccine Navigator program to highlight the importance of vaccine health.



## PICKLEBALL MANIA:

Pickleball is the captivating fusion of tennis, badminton, and ping pong that swept participants off their feet, fostering friendly competition and strong social connections. This enthusiasm was epitomized by Joyce Robinson, an ardent player who, at the age of eighty, decided to take up lessons at PSRC. She shared, “I needed exercise for my painful back and to expand my brain activity. It has been a great learning experience, helping my back and providing rewarding social interactions.” With close to 400 participants engaging in various formats, from boot camps to instructed open plays, Pickleball mania has undeniably made its mark at PSRC.



## NEW EXERCISE CLASSES:

We also introduced three enriching exercise classes. The Feldenkrais Method enhanced body awareness, coordination, and range of motion. Line Dancing provided a vibrant platform for creative expression and connections. Tai Chi nurtured balance, flexibility, and tranquility. These additions strengthen our commitment to providing holistic programs for the mind, body, and spirit.





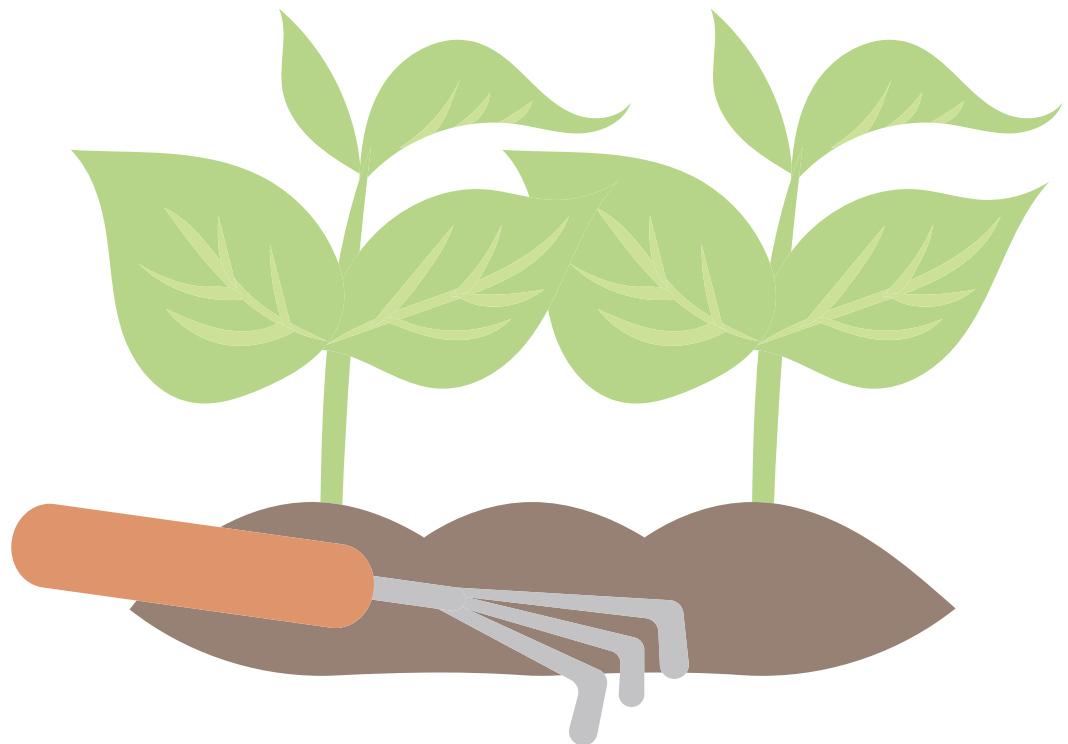
## VACCINE NAVIGATOR PROGRAM: ASSISTING OLDER ADULTS WITH VACCINATIONS

Established in winter 2021, the Vaccine Navigator program has assisted 800+ older adults in scheduling and securing vaccines. With 125 volunteers speaking seventeen languages, it has reached diverse communities. Partnering with the Princeton Health Department, the program organized community vaccine clinics and informative Town Hall presentations on Covid-19 and vaccination health.



PSRC received a \$150,000 grant from the National Council on Aging and the federal Administration for Community Living, reviving the Vaccine Navigator initiative in January 2023.

The new initiative focuses on vaccine health for older adults, including Covid-19 and influenza. Partnering with community organizations for tailored outreach and assistance to older adults helps to address their social service needs. Positive feedback from recipients highlights the program's effectiveness, with one expressing gratitude for the convenient clinics and support provided by PSRC.



# THE SOCIAL SPROUT: CULTIVATING TOGETHERNESS



In fiscal year 2023, three new community groups joined the PSRC family, providing social connections and creative outlets.

## COMMUNITY WITHOUT WALLS

In this past year, CWW and House 5 have had a new winning partnership with PSRC. At our monthly meetings at the Suzanne Patterson Building, we have had helpful presentations on the Sourlands and Herrontown Woods, on downsizing, and on selecting wines. We have shared our experiences with gardening, adventures, and misadventures with love, heard memories from our members' varied pasts. We have enjoyed a musical program, laughed at our Yankee Swap event, and always enjoyed each other's company. Our monthly Hi 5 Express has kept us up to date with our interest groups activities: recipes from the Cookbook Corner, tips and tours from the Garden Lovers, the Ethnic Dining faction's adventures into the wonderful cuisines in our area, the Movie Group's excursions, and lively discussions of cinema at dinner after, our Writers group once a month on Zoom and our newest Crowd of Crafters that meets to pursue and share each other's crafts. As this new year begins, we look forward to our deepening PSRC partnership, interest from new people curious about our activities, and continued comradery and adventures.

— Coleen M.S. and Cherie O.



*Fancy lunch at Rat's Restaurant at Grounds For Sculpture*

CWW House 3 members love to have fun. Connectivity, is being with others who have an interest in getting out. We have the joy of talking, eating, and doing things together. We have a once-a-month pizza party at Conte's and a monthly lunch at a restaurant where we socialize. Walking, movies, tea socials, music events, and special speakers round out the opportunities for members of CWW House 3 to share life together. CWW House 3 members are like an extended family. We care about your well-being and health. Come join our family.



*Picnics at PSRC*



“On Stage has given me so much joy in my first year with the group. I have learned to have more confidence in myself and love being a part of this connection to the community”

— Kristine M.





“What I love about OnStage is how the stories we tell on stage encourage tolerance and better understanding. People seem to “get” each other, no matter who tells the story or who receives it—and that is so gratifying especially in our polarized times.”

— Mimi S.

## ONSTAGE SENIORS

OnStage Seniors has a mission to tell stories. Since 2007, we gather true stories from the community and give them back to the community in the form of monologues and scenes on a yearly theme. This season’s program “Remembering,” for example, led by director Josh Schnetzer, has been performed at PSRC, libraries, assisted living centers, and houses of worship throughout the Central Jersey area and will continue into the Fall. Every performance includes a talk-back, which encourages actors and audience to find common ground and connection through the stories told on stage.

What we do is called documentary theater. Our ensemble of actors find our stories through Story Circles and one-on-one interviews in the libraries, senior centers, schools, wherever, in Central New Jersey. These stories are recorded, transcribed, and edited for the stage—our general rule being it’s okay to cut and shape, but not add or change words except for clarity.

Here are some things our actors and our audiences have to say about the experience:

“I just want to say that it was a remarkable experience to watch the audience as we performed yesterday (at a Memory Care Facility). At first, their faces were blank, looking down or staring off into space, and then one by one they began to engage as we told our stories. Smiles began to bloom, occasional sprinkles of laughter. By the end, they were all listening and reacting. It was like watching stars coming out in an evening sky.”

— Steve H.

This coming year OnStage will have a new director, David Lee White. David is an accomplished director, teacher, and playwright and we look forward to new possibilities his talents will bring to our Ensemble and to our audiences.



## SENIOR CITIZENS CLUB

In the effort to increase access and to improve services, the Senior Citizen’s Club (SCC) of Princeton has been transitioned back to PSRC. The SCC meets at PSRC every last Friday of each month from noon to 1:00 p.m. The SCC meetings focus on, among other topics, senior citizen wellness, protection from scams/fraud, food security, transportation resources, and health care opportunities. A true senior citizen leader of the initiative to develop a welcoming SCC environment and engaging programs is Rosetta Bruce. A long-time Princeton Borough resident, Rosetta and her late husband Rick, raised two children in Princeton, and she welcomes the opportunity to help the SCC grow. Rosetta’s priorities are “Making sure that all senior citizens know that they are welcome. No dues, fees, or special applications. Just show up and prepare to enjoy. I also want all senior citizens to know they are valued and that they matter. I want senior citizens to continue to build a vibrant and resourceful community in their seasoned years. There is no reason to stop growing.” For PSRC, cultivating community is not simply a cliché. To the contrary, for the PSRC, it specifically means, among other things, engaging SCC members to ensure that programs are aligned with their interests and that their vision is valued.

# BLOSSOMING BONDS



“Everyone is entering retirement and it’s hard to find people who are just starting to think about it, like me. It’s nice to make friends with people in the same stage as me.”

—Arifa K.

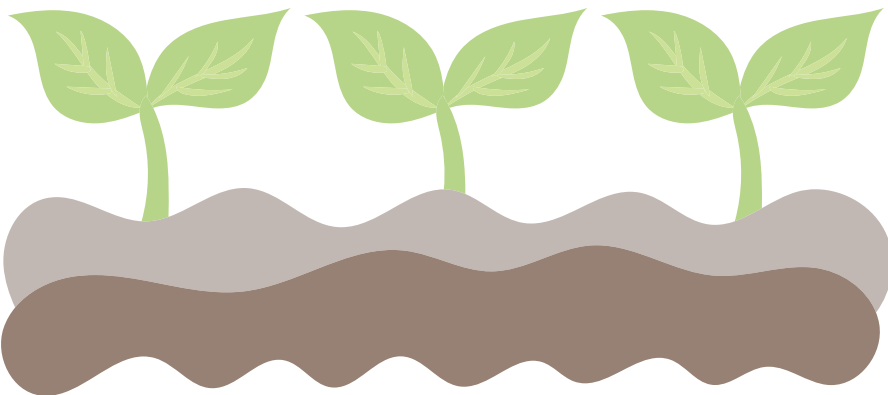
In fiscal year 2023, the PSRC social services team launched three new support and conversation groups to engage new participants and respond to emerging needs.

## FOREVER YOUNG (55–65 YEAR OLDS)

This group aims to bring together elder Gen X and younger Boomer II generations for shared experiences as they enter retirement, continue working, and navigate older parents and young adult children. This is a space for socialization and support. The group meets once monthly at our Nancy S. Klath Center for Lifelong Learning building in hybrid format and once monthly in-person for a community outing.

## AGING GAILY (LGBTQ)

This group consists of LGBTQ+ community members age fifty-five plus. This is the only group in Mercer County whose sole focus is to support aging LGBTQ+ folks. The group plans community events, attended Pride Picnic, and supports one another through life’s transitions.





## FORGET-ME-NOT: DEMENTIA CAREGIVERS

This support group was created in response to community members asking to have shared space with others who are experiencing this difficult caregiving job. Members meet monthly for ninety minutes to learn a new “trick” in caring with their loved one with memory loss and to share in each other’s joys and struggles.



“At this age you don’t usually make new friends. I am so glad this group was created!”

—Tom R.



“I love that we have a place to laugh and cry with people who understand and don’t judge me.”

—Joann S.

# SOWING THE FUTURE: A SUCCESSFUL CAPITAL CAMPAIGN

In fiscal year 2023, PSRC wrapped up the Lifelong Learning Capital Campaign by meeting 100% of our ambitious \$5.35 million goal. The capital campaign included the purchase of 101 Poor Farm Road, the renovation and building of the Nancy S. Klath Center for Lifelong Learning, and the creation of a Lifelong Learning endowment to fund building operations and lifelong learning programming for years to come. This successful campaign enabled PSRC to achieve our vision to create a world-class, multi-site community center serving older adults in the greater Princeton region.



GOAL: \$5,350,000

WE EXCEEDED OUR GOAL!

100%

\$5,350,000



“The addition of this wonderful new building is something we had always hoped for but never really believed possible given our humble origins. This additional investment in PSRC’s present and future only attests to the trust and partnership of the Princeton community!”

—Jocelyn Helm, Founding Executive Director



# GROWING TOGETHER



PSRC STAFF



PSRC LEADERSHIP TEAM  $\triangle$



PSRC DEVELOPMENT TEAM ▲



PSRC PROGRAMS TEAM ►



PSRC SOCIAL SERVICES TEAM ◀



PSRC ADMINISTRATION TEAM ▽



**Drew A. Dyson, PhD** △▽  
*Chief Executive Officer*

**Donna Cosgrove** △►  
*Chief Operating Officer*

**Lisa Adler** △▲  
*Chief Development Officer*

**Fran Angelone** ◀  
*Crosstown Coordinator (not pictured)*

**Billi Charron, MSW** ◀  
*Social Worker*

**Cathy Gara** ▽  
*Bookkeeper & HR Coordinator (not pictured)*

**Cheryl Gomes** ▲  
*Development Associate*

**Ana Carolina González-Peña** ◀  
*Coordinator of Diversity, Equity, Inclusion, and Belonging*

**Krista Hendrickson** △►  
*Director of Lifelong Learning*

**Sharon Hurley, CVA** ▽  
*Volunteer & Vaccine Navigator Coordinator*

**Ella Leving** ▽  
*Community Outreach Coordinator*

**Nick Macy** ►  
*Program Associate: Technology*

**Johanna Peters** △◀  
*Director of Social Services*

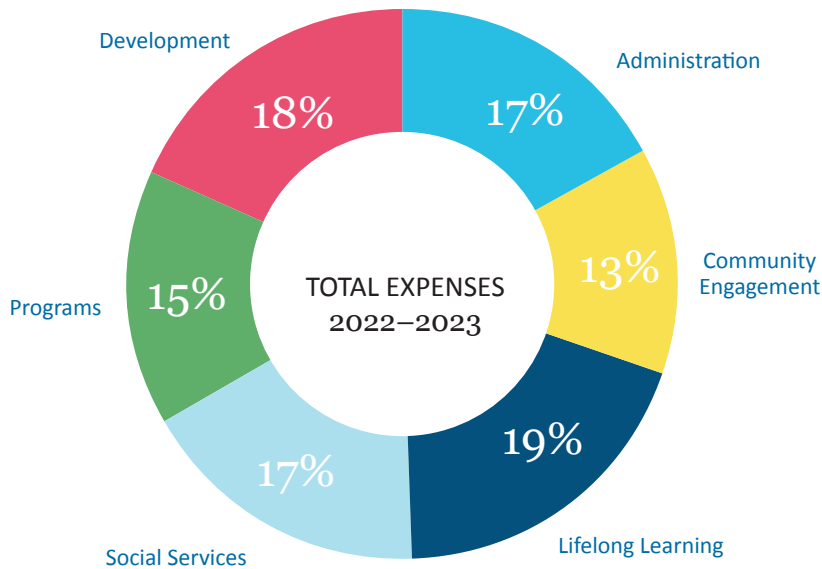
**Barbara Prince** ▲  
*Development Coordinator*

**Andrea Schwarz** ►  
*Program Associate: Suzanne Patterson Building*

**Beth Weiskopf** ►  
*Program Administrator*

**Kathleen Whalen** △▽  
*Director of Communications*

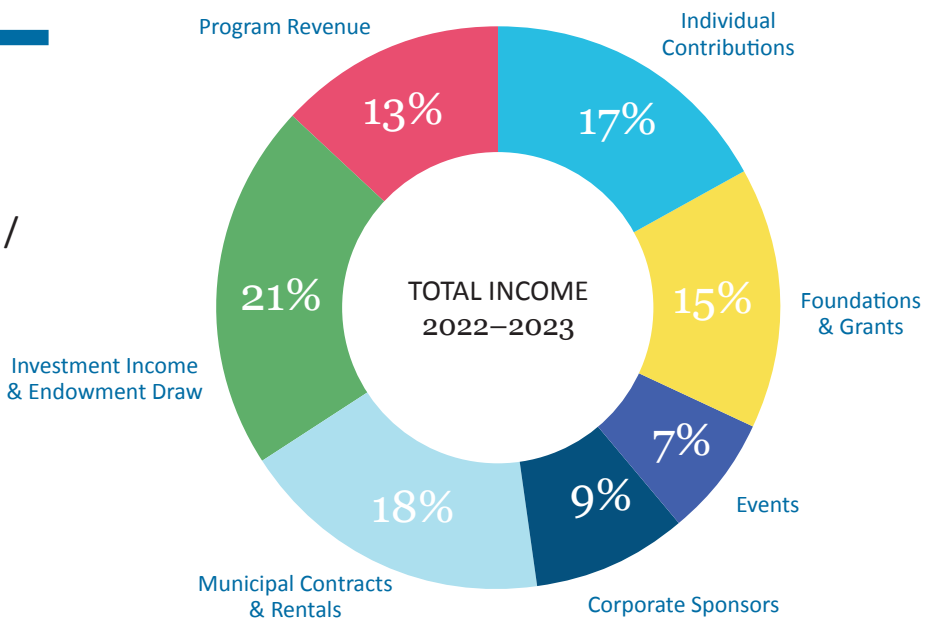
**Z Zinsitz** ▽  
*Administrative Assistant to the CEO*



PSRC's overall budget in FY '23 was \$1,379,682.00. Expense categories are broken down in the chart to the left. The FY '23 budget incorporated expenses for building operations for The Nancy S. Klath Center for Lifelong Learning at 101 Poor Farm Road.

**82%**

of PSRC's budget comes through the past and present generosity of individuals and corporate/community partners



## COMMUNITY NONPROFIT

As a community nonprofit, 82% of our budget comes through individual donations, corporate sponsorships, grants, and program income while only 18% comes through local government funding. Your gift to our annual appeal is critical to driving our mission to help older adults thrive!



## GRANTS & CORPORATIONS

Anonymous  
Bloomberg  
Bristol-Myers Squibb Foundation  
Bryn Mawr Trust/WSFS  
David Mathey Fund of the Princeton Area  
Community Foundation  
Fox & Roach/Trident Charities  
Friends Foundation for the Aging  
Henry E. Niles Foundation  
Jewish Federation of Princeton  
Mercer Bucks  
Meta A. and William S. Griffith Foundation  
PNC Bank  
Princeton Area Community Foundation  
Princeton United Methodist Church  
Princeton University Chapel  
The Curtis W. Mc Graw Foundation  
The Fred C. Rummel Foundation  
The MacMillan Family Foundation

## ANNUAL & SPECIAL PROGRAM SPONSORS

Akin Care  
Angelion Mobility, LLC  
Brandywine Senior Living, LLC – Princeton,  
Pennington & Serenade  
Capital Health  
Hamilton Jewelers  
Home Instead Senior Care  
Homewatch CareGivers  
Innovative Physical Therapy Fitness Center  
McCaffrey's Food Markets  
Nightingale NJ Eldercare Navigators  
Novi Wealth Partners  
Oasis Senior Advisors  
Peapack Private Wealth Management  
Penn Medicine Princeton Health  
Princeton eBikes  
Princeton Theological Seminary  
Rothkoff Law Group  
Roundview Capital LLC  
Silver Century Foundation  
Springpoint Choice, Inc.  
Stark & Stark Attorneys at Law  
Walsh Senior Solutions

## FALL EVENT SPONSORS & ADVERTISERS

Bradley Bartolino  
Drew and Diane Dyson  
Iona and Maurice Harding  
Gary and Shara Hofing  
Michael and Marylou Kenny  
Norman R. Klath  
Lance and LaTonya Liverman  
Mason, Griffin & Pierson, P.C.  
Mercadien Consulting, LLC  
Peapack Private Wealth Management  
Penn Medicine Princeton Health  
Kerry Perretta  
William Schmiedeskamp and Carie Levin  
Grace and Frank Sinden  
Stark & Stark Attorneys at Law  
Hazel Stix

## SPRING EVENT SPONSORS & ADVERTISERS

Artis Senior Living  
BrightStar Care  
Faegre Drinker Biddle & Reath LLP  
Norman R. Klath  
Lance and LaTonya Liverman  
NJM  
Larry and Jean Parsons  
Grace and Frank Sinden  
Ellen and Albert Stark  
The Bank of Princeton  
The Elms of Cranbury Rehabilitation & Healthcare Center

## INDIVIDUAL DONATIONS TO ANNUAL CAMPAIGN

### \$2,500 plus

Nancy Becker Fund of the Princeton Area  
Community Foundation  
J. Robert Bratman  
Catherine Brown  
Philip and JoAnn Carchman  
Liz and Milton Charbonneau  
Sudesh and Suresh Chugh  
Louise Conley  
Diane and Drew Dyson  
Gerald and Barbara Essig  
Girgus/Chimacoff Family Fund of the  
Princeton Area Community Foundation  
Maurice and Iona Harding  
Gary and Shara Hofing  
Michael and Marylou Kenny  
Norman R. Klath  
Helene and Russell Kulsrud  
Harold and Joan Kuskin  
Barbara Lawrence  
Lance and LaTonya Liverman  
William Schmiedeskamp and Carie Levin  
Grace and Frank Sinden  
Ellen and Albert Stark Foundation Fund  
of the Princeton Area Community  
Foundation  
Hazel Stix  
Ellerslie Fund of the Princeton Area  
Community Foundation

### Adelaide Zabriskie

### \$1,000 – \$2,499

Jeanne Altmann  
Elisabeth A. Bish  
Marietta Cahill  
Dawn Day  
Audrey and David Egger Charitable Fund  
at the Jewish Community Foundation of  
Greater Mercer  
Billie Emmerich  
Martha Friedman & Harold Heft Fund  
at the Jewish Community Foundation  
of Greater Mercer  
Stephanie Gittleman  
Paul Gerard and Mary Furey  
Cally Hanawalt  
William and Aline Haynes  
Jocelyn Helm  
Rosalba and Thomas Jacob

Johnson & Johnson Foundation\*\*  
Kahn Family Philanthropic Fund at  
the Jewish Community Foundation  
of Greater Mercer  
Katz/Kurinsky Philanthropic Fund at  
the Jewish Community Foundation  
of Greater Mercer  
Vikilaura List  
Joseph and Jane Maida  
Candace and Marvin Preston  
Harry and Barbara Purnell  
Rosalie Slutsky  
Marilyn and Barry Steiner  
Sylvia Stengle  
Hunt and Margie Stockwell  
Jeannette Tregoe  
Daniel and Welmoet van Kammen  
Joan and Ralph Widner  
Joshua and Advah Zinder

### \$500 – \$999

Mark Kolins and Maria Abrahamsen  
Henry and Theresa Acselrod  
Bradley Bartolino  
Donald Benjamin and Dee Dee Dodson  
Manfred and Mechtild Bitter  
Bristol-Myers Squibb Foundation\*\*  
Ruth Bronzan  
Charles and Lucinda Clark  
Lucy and Kerry Faden  
Miquelone Weyeneth and Henry Farber  
Marsha and Eliot Freeman  
Hendrik and Nancy Hartog  
Nancy Hodges  
Stanley and Adria Katz  
Katherine Klotzburger  
Jennifer Krychowecky  
Kathy Ales and Richard Levine  
Robert and Joan Levitt  
Nancy and Donald Light  
Burton and Nancy Malkiel  
Lucien Marchand  
Tyhesha Marshall  
Joseph and Tamara Matteo  
Ben and Yasuko Moyer  
Kerry Perretta  
David and Alison Politziner  
William and Nancy Robins  
Karen and Ronald S. Schotland  
Kathryn Stokel and Peter Ligeti  
Jeffrey Tener  
Judith and Michael Walzer  
Velma Williams-Gates  
Ross and Lesley Wishnick  
Michael and Lynn Wong  
Derek and Judith Wooldridge  
Zvilin Fund of the Princeton Area  
Community Foundation

### \$250 – \$499

Nerva Acosta and Minerva Rivera Nieves  
Adele Agin  
Susan and Lou Asack  
David and Lorraine Atkin  
Steven Averbuch and Rachel Rivest  
Aneesh Bakshi  
Joan Bartl  
Kathleen and Charles Beach

Louise and David Beyer  
 Marcia Bossart  
 Stephen Adler and Sarah Brett-Smith  
 Elizabeth and David Cohen  
 Emily Eischen  
 Byron and Peg Fiman  
 Mark Freda and Beth Ogilvie-Freda  
 Maria and Paul Galeota  
 Gerald and Geri Garfinkle  
 Barry Goldblatt  
 Barbara Greenstein  
 Barbara and William Happer  
 Hilary Hays  
 Elaine Jacoby  
 Dave Saltzman and Heidi Joseph  
 Martha Lamar  
 Susan Levine  
 Cynthia Levy  
 Priscilla Light  
 Daniel and Bobette Lister  
 Phyllis Teitelbaum and Anthony Lunn  
 Pamela and Roland Machold  
 Edward Matthews  
 Denise and Thomas McGough  
 Joanne Meehan  
 Bernard and Ruth Miller  
 Debra Morgenstern  
 Jane Murphy and Charles Karney  
 William Ogilvie  
 Linda Oppenheim and Robert Karp  
 Lise and Stephen Pacala  
 John Burgess and Aigli Papantonopoulou  
 Sue and Anthony Parisi  
 Larry and Jean Parsons  
 Carol and Mark Pollard  
 Allen and Rhona Porter  
 Diane Procaccini  
 Caroline Purnell  
 Louis and Françoise Rollmann  
 Martin and Judith Schwartz  
 Barbara Silberstein  
 Stephen and Carol Skillman  
 James and Sue Steinmetz  
 Zori Stern  
 Ellen Tattenbaum and Allen Lepore  
 John and Ursela Taylor  
 Gail Ullman  
 Susan Wilson  
 Louise Witonsky

**\$100 – \$249**

Nancy Hall and Toshi Abe  
 Carol Ackerman  
 Lisa and Ben Adler  
 Judith Adler  
 David Miller and Irene Amarel  
 James Amick  
 Nancy Amidon  
 Frank Magalhaes and Rita Asch  
 Andrea Auerbach  
 Alice Baker  
 Grayson Barber and Peter Meyers  
 Barbara Barnett  
 Michael Bell and Jane McCarty  
 Francesca Benson  
 Linda Benson  
 Linda and Buzz Berger  
 Peteris Krumins and Carroll Bever  
 Marvin Bielawski  
 Linda Blackburn

Rev. Deborah Blanks  
 Barbara Bleeker  
 Andrew and Paola Belloch  
 Marty and Anne Bloomenthal  
 Mary Ellen Bowen  
 Anne Brener Kahn and Edward Linky  
 Anthony and Judy Brickman  
 Victor and Beth Brombert  
 Rosetta Bruce  
 Kathleen O'Brien and Matthew Cahn  
 Roy and Catherine Carman  
 Susan Carson  
 Rita Chait  
 Bill and Janis Charkow  
 Susan and David Colby  
 Graham and Carol Cole  
 Patrick and Margaret Condon  
 Lynn and Lewis Coppersmith  
 Lula Crawford  
 Roger Crevier  
 Lynne Cullinane  
 Susan Darien  
 Wayne Daughtrey  
 Hanneke and Hans De Ruyter  
 Helge Deaton  
 Boel Denne-Hinnov  
 John Denny  
 Patricia Donohue  
 Phyllis Dorfman  
 Marilyn Durkee  
 Peter and Landis Eaton  
 Frederick Edelman and Frances  
 Zeitler Edelman  
 Joanna Edgar  
 James Edgren  
 Barry Katz and Juliann Fairnak-Katz  
 Miguel and Elizabeth Fernandez  
 Paul Finney and Kathleen McVey  
 Candyce Forster  
 Patricia Frawley  
 Judith and Claude Frazer  
 John Frederick  
 Marilyn Freeberg  
 Phyllis Freed  
 Karen and Ira Fuchs  
 David and Carol Ann Fulmer  
 Robert Mehlman and Linda Gochfeld  
 David Goldfarb  
 Fred and Selma Goldstein  
 Bobby and Cheryl Gomes  
 Eva Gossman  
 Dan and Nina Gowaty  
 Bill Green  
 Paul Knight and Jennifer Guy  
 Carl and Carol Haag  
 Kate and John Hall  
 Joseph and Judith Harkay  
 Mary Louise Hartman  
 Richard and Leslie Hayes  
 Nancy and Rick Henkel  
 Joel Heymsfeld  
 Prather Hill  
 J. Robert Hillier  
 Joelle Hofbauer and Herb Hirsch  
 Lisa Houston  
 Martha and Gregory Hughes  
 Nancy Irenas  
 Gary Irvine  
 Leonore Itzkowitz  
 David and Claire Jacobus

Doris Jankowicz  
 Edith Jeffrey  
 Ann Johanson  
 Miraoslawa Jurusz  
 Christina and Robert Kales  
 Herbert Kaufmann  
 Regina Kenen  
 Teresa Kent  
 Ann Kerr  
 Darryl and Julian Kestler  
 Rev. Louise and Michael Kingston  
 Eliza and Cornel Toma  
 Barbara Kirsh and Arthur Firestone  
 Barbara Kisby  
 Everett Kline  
 Ronald and Rita Kraft  
 Krakauer Fund at the Jewish Community  
 Foundation of Greater Mercer  
 Peter and Seva Jaffe Kramer  
 Lynda Kresge  
 Pushpa Kulkarni  
 Lavinia and Suriender Kumar  
 Jackie Kwitko  
 Robert Lafond  
 Marilyn Lavin  
 Edward and Wendy Lazarus  
 Elizabeth and James Lee  
 Fui-Tseng and Peter Lee  
 Jeanne and Sher Leiman  
 Leslie and Robert Lem  
 Michael and Judy Leopold Fund at  
 the Jewish Community Foundation  
 of Greater Mercer  
 W. Bruce Leslie  
 Nancy Letteney-Silver and Arthur Silver  
 Patricia Lewis  
 Josh Lichtblau and Linda Schwimmer  
 Howard and Denis Lieberman  
 Judy and Skip Livingston  
 Sandra Lopacki  
 James Louis  
 Jeff Lucker  
 Catherine Lynd  
 Michele Ochsner and Terry Lyons  
 Ed Madsen  
 Susan Mandhyan  
 Coleen Marks Schlawer  
 Anastasia Marty  
 Virginia Mason  
 Wendy Matthews  
 John and Susan McCaskie  
 Charlotte McLaughlin  
 Beryl McMillan  
 Robert and Judith Mecklenburger  
 Agnieszka Gerwel and Peter Merrett  
 Katherine and David Miller  
 Ronald and Eileen Miller  
 Jacqueline Mislow  
 Cynthia and Manuel Montes  
 Elisabeth Morgan  
 Karl and Anne Morrison  
 Joel Moss  
 Karoline Moxham  
 Rita and Robert Murray  
 Penelope Murray  
 Rosemary Nadeau  
 Yash and Jeffra Nandan  
 Janet Narayan  
 Nancy Naughton  
 Helen Neuburg

Cynthia and Steve Newfield  
 Eve Niedergang and Andy Weiss  
 Brad and Jean Nitzberg  
 Beverly O'Connor  
 William and Mary O'Shaughnessy  
 Patricia and Marvin Ostberg  
 Martha Otis  
 Shashank and Surendra Otiv  
 June and Peter Ouyang  
 Gary Patton  
 Vivian Pepe  
 Samuel Perez and Eunice Vega-Perez  
 Barbara Pervin  
 Elyse Pivnick  
 Charles Plohn  
 Marcia and Caesar Primus  
 Barbara Prince and Barry Sagotsky  
 Eugenia Procyk  
 Plamen Prodanov  
 Thomas and Nancy Purnell  
 Tamar Rabb  
 Stephen Fitzpatrick and Alexandra Radbil  
 Robert Holley and Paul Raeder  
 Lillian Rankel  
 Linda Revelle  
 Sarah Ringer  
 Paul Robertson  
 Lynne Robillard  
 Tobias and Elaine Robison  
 Naomi Rose  
 Irwin and Cecilia Rosenblum  
 Llewellyn Ross  
 Martin and Martha Rossman  
 Kathleen Fiery and David Rousell  
 Patrick Rulon-Miller  
 Michele Ruopp  
 Kathleen and Louis Russo  
 Norma Saks  
 Susan Sanford  
 Tony Santosuosso  
 Susan Schechter  
 Mary Schedl  
 Cornelia and Walter Schmidt  
 Thomas and Diane Seessel  
 Carla Servin  
 Surinder and Rashma Sharma  
 Michele Alperin and Steven Sheriff  
 Robert and Cynthia Shull  
 Christine Sibley  
 Jane Silverman  
 Rudolph and AnnaMarie Skalka  
 Joseph and Alice Small  
 Sally and Thomas Smith  
 Marcia Snowden  
 Tanya Soffer  
 Miriam and Roy Sparrow  
 Sandra Spies  
 Marcella Stapor  
 Elly Stein  
 Marjorie Steinberg  
 Margaret and Robert Stengel  
 Stewart & Stevenson Power Products\*\*  
 Carol Stokes  
 Sally and Jeffrey Stout  
 Ann Strumpfen-Darrie  
 Phyllis and Michael Suber  
 Barbara Sullivan and Charles Greenberg  
 Pat Summers

Alissa and William Sutphin  
 Len Swanson  
 Binnie Thom  
 Amie Thomas  
 Jeanette and Mike Timmons  
 Rebecca Treiman  
 Jacqueline E. Turner  
 Margaret Vanmarcke  
 David and Barbara Vilkomerson  
 Christian Wallace  
 Judith Weinberg  
 Barbara Whitman  
 Elizabeth Anne Whittle  
 Ludmilla Wightman  
 Janet Williams  
 Theresa Winslow  
 Joseph Wofchuck  
 Suzanne and Steve Wray  
 Frederick and Judith Young

**Up to \$99**

Anonymous  
 Susan Ackerman  
 Earl Ainsworth  
 Carol Allen  
 Margarida Anderson  
 Francine Angelone  
 Polyxeni and Achilleas Antoniadis  
 Elaine Armas  
 Louise Bachelder  
 Deborah Badgett  
 Carleen Baily  
 Iris Barrios  
 Jeffrey Barton  
 Elizabeth Bates  
 Dorothy Batho  
 Vivian Beenstock  
 Julianne Bell  
 Mary Bell  
 Teri Bellows  
 Renate Benham  
 Elisabeth Bennett  
 Sherry Bergmann  
 Jerry and Sheila Berkelhammer  
 Ritta Bernshteyn  
 Shirley Blankstein  
 Andrea Bonette  
 Edward Bonfield  
 Patricia Borden  
 Iris Borek  
 Joy Brachman  
 Barbara Brandt  
 Derek Bridger  
 Barbara Briggs  
 Bruce Bristow  
 Cheryl and Howard Bromwich  
 Carol Brown  
 Howard and Helene Buckwald  
 Deborah Budd-Levine  
 Dulcie Bull  
 John and Janet Burton  
 Danuta Buzdygan  
 Claire and Thomas Calandra  
 Ghazal Campbell  
 Victoria Campbell  
 Blair and Karen Capriotti  
 Jo Ann Carrell  
 Cathleen Carroll

Barry and Cheri Chalofsky  
 Joseph Champagne  
 Shirley Chan  
 Humphrey Chang  
 Ronghao Chen  
 Deborah Cherniss  
 Joanne and Edward Chiang  
 Ira Chudnow  
 Roberta and Lindsey Churchill  
 Elaine Citron  
 Lucinda and Charles Clark  
 Linda Clark  
 Wilma Classon  
 Dianne and Tom Cohen  
 Jane Conrad  
 Catherine Consoli  
 Harry Cooke  
 Marie Corazza  
 Dorothy Lewis and Clement Cottingham  
 Barbara Coyle  
 Patrick and Renate Crowley  
 Barbara Curran  
 Christine Danser  
 Lawrence and Mimi Danson  
 Dorothy David  
 Sheila Davidow  
 Evelyn Delaney  
 Charles Westoff and Jane DeLung  
 Jane DeMaio  
 Paul Dermody  
 Justine DeVries  
 Charles Di Domenico  
 Laura DiTullio  
 Vera Dowd  
 Brian and Shelly Dubin  
 Louise DuBois  
 Michael and Linda Dubrow  
 William Dunn  
 Gary and Toby Ehrlich  
 Elizabeth Elliott  
 Maria Eng  
 David Carroll and Mary Enright  
 Celeste Eppinger  
 Marilyn Fagles  
 Lin Ferrand  
 Nancy Johnson and Larry Filler  
 Maxine Finger  
 Susan Fisher  
 Toni Flint  
 Ellen Foos  
 Susan Fox  
 Hanna Fox  
 Margaret Fry  
 Wing Fung  
 Partha and Momota Ganguli  
 Judith and Richard Gans  
 Cathy Gara  
 Betsy Garber  
 Judith Gardner  
 Ann Garvey  
 Gennie Gehrkin  
 Angela Gelber  
 Eliane Geren  
 Michal Gerwel  
 Irene Gianopoulos  
 Claire Gilbert  
 Amy Gimbel  
 Shirly Goetz

◆ In memory of

\*\* Company provides a matching gift.

Judith Goetzmann  
Jill Goldberg  
Irene and Samuel ♦ Goldfarb  
Amy Goldstein  
Steve and Nancee Goldstein  
Marsha Gordon  
Jeff and Kristine Grabell  
Patricia and Milton Grannatt  
Gina Grant  
John Graubard  
Bill and Stephanie Gray  
Barbara-Ann Greenberg  
Audrey Greenblatt  
Elena Greene  
Sara and Stanley Gross  
Julius and Ria Gross  
Robert Gross  
Janice Gross  
Marilyn Grounds  
Gerri Guadagno  
Prad Guhathakurta  
Francis Gupta  
Caroline Hancock  
Sally Handy-Zarnstorff  
Mary Anna Hanke  
Catherine Harper  
Betty Harris  
Victoria Hasser  
Katherine Hatton and Richard Bilotti  
Lorraine Haucke  
Lily Hayeem  
Stephanie Heidere  
Rosa Heinbach  
Albert Hepner  
Colin Hill  
Elisa Hirvonen  
Leon and Anne Hoffmann  
Jennifer Holloway  
Philip and Ruth Holmes  
Jane Holmquist  
Jeanette Hooban  
Susan Hope  
Allan Horwitz  
Ellen Houck  
Denise Houghton  
Ann Hovanec  
Roy Hovey  
Ella Hullfish  
Adelaide Humphrey  
Chase and Suzanne Hunt  
Christine and Ronald Hurley  
Sharon Hurley  
Marvin and Lillian Israel  
Marvin and Shellie Jacobson  
Audrey Jakob and Alejandro Berlin  
John Johnson  
Lucille Joye  
Al and Mea Kaemmerlen  
Linda Kandle and Alexandra Pinz  
Ginger and William Kane  
Lawrence Kaplan and Ann Ryan  
Robert Karlin  
Evelyn Kassuf  
Ann Katz  
Leslie Katz  
Millicent Kellner  
Josephine Kelly  
David and Maureen Kimball  
Martha King  
Susan Klein

Virginia Knapp  
Chris Knigge  
Leah Kolb  
Lilliane Koopman  
Joel Kramer  
Fred Kreisler  
Sheila and Ross Kremer  
Joy Kreves  
Stanley and Renee Kugel  
Fay Lachmann  
Jane Lafferty  
Maxine Lampert  
Jo Ann Laveman  
John Lawlor and Lynn Brennan  
Florence Laws  
Rena Lederman  
Sue Lee  
Paul and Phyllis Lehrer  
Gerald Lenaz  
Bonnie Leonard  
Suzanne Levin  
Jane Li  
Patricia Liddie  
Marie Linke  
Neil and Eleni Litt  
Robert Liwacz  
Wendy Lodge  
Ernest and Carol Loffredo  
Bruce London  
Salim and Patricia Lone  
Eila Mackenzie  
Alice Macnow  
Seth and Judith Malin  
Mary Malley  
James and Patricia Manganaro  
Moshe and Judith Margolin  
John Silber and Janice Marino  
Helen Marshall  
Edward Martinsen  
Paula Masciulli  
John Mason  
Mitchell and Alice Mass  
Ingrid Mathew  
Chrystal McArthur  
Florence McAuliffe  
Peggy McDermott  
Brian and Linda McGrath  
Teri McIntire  
Michelle McKenna  
Lydia McKenna  
Joe and Gisele Mendola  
Kathleen Merwin  
Susan Meyer  
Michael and Marcia Midler  
Leda and Michael Molly  
Maria Moreno  
Barry and Elayne Moss  
Kristine Mossinghoff  
Roderick and Heather Mullett  
Susan Murphy-LaMarche  
Joo Nam  
Eleanor Nelson  
Susan Neshin  
Melanie Ng  
Ronald Nielsen  
Rose Nini  
Mary Jane and Glenn Northey  
Stanley Novick  
Susan Nowelsky  
Rose and Tim O'Connor

Kathleen O'Neill  
Margaret O'Reilly  
Joseph O'Sullivan  
Lydia Oakes  
Gretchen Oberfranc  
Rose Mary Obinger  
James Ohls  
Paul Olsavsky  
Kathleen Owens  
Daniel Pace  
Hanna Paczynska  
Jay and Mary Palmer  
Michele Pannone  
Lori Pantaleo  
Ronnie Pardo  
Joan Patton  
Lois Pauley  
Patricia Payne  
Ken and Barbara Peabody  
Cindy Peifer  
Johanna Peters  
Christine Piatek  
Richard Pine  
Marianne Piroue  
Joel and Marie Pitt  
Darlene Plummer  
Pearl Podell  
Robert and Marion Pollack  
Joel Potter  
Charles Potzer  
Lore Prag  
David Quinlan  
Andrea Rabel  
Elaine Rafferty  
Joseph and Margaret Ram  
Elizabeth Ramage  
Debra Rathauer  
Wendy Rayner and Paula Wristen  
Alice Redder  
Margaret Regan-Levine  
Helene Reiss  
Joan Resnick  
Yasmin Reyes  
Joseph Richel  
Linda Ricker  
Claire Roberts  
Miriam and James Robin  
Joyce Robinson  
Martin and Rebecca Rome  
Mark Root  
Victoria Rose  
Dorothy Rosen  
Sherry Rosen  
Barbara Rosenberg  
David and Joan Rosenfeld  
Leslie and David Rothberg  
Irina Royzengurt  
Michael and Patricia Rubino  
Jan Runkle  
Uta Runyan  
Julia Sabella  
Ann Salzberg  
Alethia Sampson  
Jean Samuel  
Lawrence Samuels  
John Sarappo and Laura Lowrie  
Steven and Melanie Satran  
Lynda Sauer  
Joeanna Sayler  
Barbara Schaeffer

Elaine Schatz  
 Jeanne Schechter  
 Larsen and Irene Schilling  
 Edwin Lee and Connie Schofer  
 Edward and Carol Schonfeld  
 Lori Schwartz  
 Jocelyne Scott  
 Jane Scott  
 Beverly Seche-Thomas  
 Anne Seltzer  
 Jeanne Shagg  
 Leela Shah  
 Kathleen Shanahan  
 Catherine Sheehan  
 Betsy Sherer and Nancy Bialler  
 Stephen Shiel and YeeMay Fung  
 Christine Shungu  
 Corinne Siegel  
 Jacqueline Simard  
 Jean Simard  
 Lorraine Simbala  
 Jane Simpson  
 Catherine and Chris Sims  
 Arnold Sirota  
 John Skolas  
 Karen Sladek  
 David Smith  
 Keith Doney and Sandra Smith  
 A. Stewart and Norma Smith  
 Keisha Smith-Carrington  
 Neuza Smukler  
 Marilyn Smyk  
 Magdalena Sokolowski  
 Anthea Spencer  
 Dianne and Anna Steele  
 William Stein  
 Regina Stem  
 Ada and Simon Suckewer  
 Alyce Swartz  
 Cheryl and Warren Sweberg  
 Marilyn and Reli Tal  
 Sue Tame  
 Carl and Joyce Tatsch  
 Ellen Teitelbaum  
 Murugesu Theivakumaran  
 George Theodoridis and Janet Stern  
 Susan Thomas  
 Elizabeth Timberman  
 Marc Tolo and Alice Hay-Tolo  
 Janet Tooma  
 Sten Tornegard  
 Caroline Travers  
 Saloman Tucubal  
 Mauri Tyler and Lorraine Hand  
 Chris and Robin Van Buren  
 Hillary Vanderstucken  
 Lee and Melinda Varian  
 Deloris Verchere and Stephen Polen  
 Susan and Vasanth Victor  
 Karen and David Voorhees  
 Marue Walizer  
 Frank Walker  
 Phyllis Warren  
 Jill Warrington  
 Donald and Leslie Weber  
 Rick and Susan Wehmann  
 Doris-Renee and Alfred Weiner  
 Hans Weinrich

Neil and Vicki Weisfeld  
 Carolyn Wells  
 Kathleen Whalen  
 Sidney and Maryann Whitman  
 Rita Whitney  
 Christa and Josiah Wiley  
 Barbara Williams  
 Jack and Janet Wolinetz  
 Mary Wood  
 Karen and Richard Woodbridge  
 David and Deena Worrell  
 Barbara Wright  
 Jean Yepes  
 Loretta Young  
 Barbara Zareba  
 Florence Zeszotarski  
 Gail Zivot  
 Ellen and Jerome Zollenberg  
 Maria Zolotareff

**LIFELONG LEARNING CAPITAL  
 CAMPAIGN GIFTS AND PLEDGES  
 AS OF 6/30/2023**

**\$5,000 Plus**

Anonymous  
 Henry and Theresa Acselrod  
 David and Lorraine Atkin  
 David and Pat Atkinson  
 Nancy Becker Fund at the Princeton Area  
 Community Foundation  
 Bloomberg Philanthropies  
 J. Robert Bratman  
 Liz and Milton Charbonneau  
 Sudesh and Suresh Chugh  
 Diane and Drew Dyson  
 Billie Emmerich  
 Eliot and Marsha Freeman  
 Joseph and Mary Giordmaine  
 Gircus/Chimacoff Family Fund of the  
 Princeton Area Community Foundation  
 Andrew and Carol Golden Fund of the  
 Princeton Area Community Foundation  
 The Gordon and Llura Gund Foundation  
 Maurice and Iona Harding  
 Lois Harrod  
 Elaine Jacoby  
 Emilie Kaden  
 Michael and Marylou Kenny  
 Norman R. Klath  
 Norman and Nancy Klath Fund of the  
 Princeton Area Community Foundation  
 Katherine Klotzburger  
 Helene and Russell Kulsrud  
 Harold and Joan Kuskin  
 Barbara Lawrence  
 Robert and Joan Levitt  
 Victoria Leyton  
 The William and Nancy Lifland Fund of the  
 Princeton Area Community Foundation◆  
 Nancy and Donald Light  
 Lance and LaTonya Liverman  
 The David & Catherine Loevner Family Fund  
 The MacMillan Family Foundation  
 Joseph and Jane Maida  
 Edward E. Matthews  
 McAlpin Fund of the Princeton Area  
 Community Foundation◆

New Jersey Economic Development  
 Authority  
 NJM  
 Reba Orszag  
 Kerry Perretta  
 Princeton University  
 Purnell Family Fund  
 Robert Wood Johnson Foundation  
 The George H. and Estelle M. Sands  
 Foundation  
 Robert Wood Johnson Foundation\*\*  
 Judy McCartin Scheide  
 William Schmiedeskamp and Carie Levin  
 Surinder and Rashma Sharma  
 Jane A. Silverman and The Aresty  
 Foundation  
 Grace and Frank Sinden  
 The Ellen and Albert Stark Foundation  
 Fund of the Princeton Area Community  
 Foundation  
 Kurt and Alison Steiner  
 Hazel S. Stix  
 The George H. and Estelle M. Sands  
 Foundation  
 Ellerslie Fund of the Princeton Area  
 Community Foundation  
 Wallerstein Foundation for Geriatric Life  
 Improvement  
 Judith and Michael Walzer  
 Kevin Wilkes  
 Adelaide Zabriskie

**Up to \$4,999**

Lisa and Ben Adler  
 Carol Allen  
 Susan Anderson  
 Fran Angelone  
 Susan and Lou Asack  
 Bradley Bartolino  
 Joan Bassett  
 Donald Benjamin and Dee Dee Dodson  
 Francesca Benson  
 Richard Bianchetti  
 Carole and Jay Bienstock  
 Abbe Binstock  
 Elisabeth A. Bish  
 Olivian Boon  
 Harold Borkan Fund at the  
 Jewish Community Foundation  
 of Greater Mercer◆  
 Etta Bray  
 Ruth Bronzan  
 Catherine Brown  
 Howard and Helene Buckwald  
 Susan Burns  
 Helen Burton  
 Philip and JoAnn Gardenswartz Carchman  
 Fund of the Jewish Community  
 Foundation of New Mexico  
 Jo Ann Carrell  
 Linda Clark  
 Elizabeth and David Cohen  
 Anita L. Cohen◆  
 Susan and David Colby  
 Catherine Consoli  
 Donna Cosgrove and Greg Voynow  
 Chris Coucill  
 Jean Crane

◆ In memory of

\*\* Company provides a matching gift.

Lynne Cullinane  
Joel Deitz and Barbara Berko  
Vera Dowd  
Michael and Linda Dubrow  
Arthur and Janet Eschenlauer  
Pamela Espenshade  
Kathy Eustice  
Sue and Greg Evans  
Maria Falconetti  
Byron and Peg Fiman  
Arthur Firestone and Barbara Kirsh  
Abraham Podolak and Evelyn Forman  
Judith and Claude Frazer  
Mark Freda and Beth Ogilvie-Freda  
Margaret Fry  
Richard Gallaudet  
Patricia Gallivan  
Cathy Gara  
MaryJoan Gaynor  
Paul Gerard and Mary Furey  
Patricia Gibney  
Stephanie Gittleman  
Cheryl and Bobby Gomes  
Jane and John Gore  
Patrick McDonnell and Anne Gribbon  
Sheba Gul and Nilesh Kotecha  
Kate and John Hall  
Joseph and Judith Harkay  
Jocelyn Helm  
Joel Heymsfeld  
Cynthia Hill  
J. Robert Hillier  
Allan Horwitz  
Scott and Susan Hoskins  
Sharon Hurley  
Leonore Itzkowitz  
Robert and Nanci Jacobson  
David and Claire Jacobus  
Joshua Kaden and Giulia Cox  
Kahn Family Philanthropic Fund at  
the Jewish Community Foundation  
of Greater Mercer  
Jeanne A. Katen  
Katz/Kurinsky Philanthropic Fund at  
the Jewish Community Foundation  
of Greater Mercer  
Stanley and Adria Katz

Ann Katz  
Paul Knight and Jennifer Guy  
Mark Kolins and Maria Abrahamson  
Richard Kraeuter  
Jennifer Krychowecy  
Jane Kupin  
Martha Lamar  
Edward and Wendy Lazarus  
Michael and Judy Leopold  
Suzanne Levin  
Josh Lichtblau and Linda Schwimmer  
Milton Lieberman  
Vikilaura List  
William Lockwood  
Phyllis Teitelbaum and Anthony Lunn  
Anna Lustenberg  
Pamela and Roland Machold  
Lucien Marchand  
Virginia Mason  
Denise and Thomas McGough  
Abigail Waugh Meletti  
Judith and Richard Meyer  
Bernard and Ruth Miller  
Jacqueline Mislow  
Cynthia and Manuel Montes  
Debra Morgenstern  
Reid Murray  
Yash and Jeffra Nandan  
Janet Narayan  
Helen Neuburg  
Steve Newfield  
Brianna Newton  
Eve Niedergang and Andy Weiss  
Rose Nini  
Rose Mary Obinger  
Dr. Ferris Olin  
Ken Peabody  
Carol and Mark Pollard  
Allen and Rhona Porter  
Barbara Prince and Barry Sagotsky  
Suzanne Rebick  
Ingrid W. Reed  
Jim and Karen Reeds  
Reichelderfer-Blair Fund of the Princeton  
Area Community Foundation  
Sandy Reider  
Irwin and Cecilia Rosenblum

Barbara Ross  
Martin and Martha Rossman  
Kathleen Fiery and David Roussell  
Cynthia Sage  
Dave Saltzman and Heidi Joseph  
Kenneth Samoil  
Evelyn and Jeff Sasmor  
Joeanna Saylor  
Mary Schedl  
Judith and William Schreiber  
Michele Alperin and Steven Sheriff  
Harpreet Sidhu  
Magdalena Sokolowski  
William Stein  
Sylvia Stengle  
Hunt and Margie Stockwell  
Barbara Straut  
Phyllis and Michael Suber  
Pat Summers  
Patricia and Oliver Taylor  
Jeffrey Tener  
Lisa and Michael Ullmann  
Chris and Robin Van Buren  
Donna Weintraub  
Bruce and Beth Weiskopf  
Karen and Christopher Westcott  
Charles Westoff and Jane DeLung  
Joan and Ralph Widner  
Alma Williams  
Susan N. Wilson  
Louise Witonsky  
Joseph Wofchuck  
Derek and Judith Wooldridge  
Ali and Waldburg Zomorodi

Every effort has been made to ensure the accuracy of the gifts listed in the 2022–2023 Annual Report. Please notify the development office at 609.751.9699, or [ladler@princetonsenior.org](mailto:ladler@princetonsenior.org) if you notice any discrepancies or have any questions.

# TRUSTEES

**Joan Girgus**  
*Chair*

**Josh Lichtblau**  
*Vice-Chair*

**Lance Liverman**  
*Vice-Chair*

**J. Robert Bratman**  
*Secretary*

**Brad Bartolino**  
*Treasurer*

---

**Kathy Ales**

**Nancy H. Becker**

**Rev. Deborah K. Blanks**

**Philip Carchman**

**Liz Charbonneau**

**Suresh Chugh**

**Iona Harding**

**Elaine Jacoby**

**Michael Kenny**

**Norman Klath**

**Jennifer Krychowewky**

**Harold Kuskin**

**Barbara Lawrence**

**Robert Levitt**

**Joseph C. Maida**

**Surinder Sharma**

**Jane Silverman**

# ADVISORY COUNCIL

**David Atkin**

**William Burks**

**Billie Emmerich**

**Paul Gerard**

**Claire Jacobus**

**Barbara Purnell**

**Nancy Robins**

**Irwin Rosenblum**

**Dave Saltzman**

**Albert Stark**

**Hazel Stix**

**Jack Wallace**

# PSRC STAFF

**Drew A. Dyson, PhD**  
*Chief Executive Officer*

**Donna Cosgrove**  
*Chief Operating Officer*

**Lisa Adler**  
*Chief Development Officer*

---

**Fran Angelone**  
*Crosstown Coordinator*

**Billi Charron, MSW**  
*Social Worker*

**Cathy Gara**  
*Bookkeeper & HR Coordinator*

**Cheryl Gomes**  
*Development Associate*

**Ana Carolina González-Peña**  
*Coordinator of Diversity, Equity, Inclusion,  
and Belonging*

**Krista Hendrickson**  
*Director of Lifelong Learning*

**Sharon Hurley, CVA**  
*Volunteer & Vaccine Navigator Coordinator*

**Ella Leving**  
*Community Outreach Coordinator*

**Nick Macy**  
*Program Associate: Technology*

**Johanna Peters**  
*Director of Social Services*

**Barbara Prince**  
*Development Coordinator*

**Andrea Schwarz**  
*Program Associate: Suzanne Patterson  
Building*

**Beth Weiskopf**  
*Program Administrator*

**Kathleen Whalen**  
*Director of Communications*

**Z Zinsitz**  
*Administrative Assistant to the CEO*

# HOW CAN YOU HELP OLDER ADULTS THRIVE?

PSRC, a community nonprofit, is sustained largely by donor support. Almost half of our total operating budget comes from individual donations and support of our programs and services. Your gift enables us to offer a wide variety of opportunities for aging adults and their families including first-rate social services, lifelong learning classes and programs, art and exercise classes, and a myriad of other stimulating activities every month.

To learn more about PSRC and ways you can support and share in our success with your annual gift or a legacy commitment, please visit [princetonsenior.org/support/donate](https://princetonsenior.org/support/donate) or call 609.751.9699, ext. 103.



[princetonsenior.org](https://princetonsenior.org)